

INDIAN AT
heart
modular to
the core

KUTCHINA® | MODULAR
KITCHEN
Designed for Convenience

INTRODUCTION 02

STANDARD KITCHENS 06

- 1. NUMICA STRAIGHT 08
- 2. NUMICA-L 12
- 3. HI-GLOSS STRAIGHT 16
- 4. HI-GLOSS L 20
- 5. NUGLOSS 24



table of contents



PREMIUM KITCHENS 28

- 1. ACRIMUM 30
- 2. WOODY 34
- 3. LACQUERY 38
- 4. POLYGON 42
- 5. POLYWOOD 46
- 6. GLASSYLIC 50



LUXURY KITCHENS 54

- 1. CRYSTALUX 56
- 2. ACRYLUX 62
- 3. STONILUX 68
- 4. POLYLUX 74
- 5. FUSILUX 80

ACCESSORIES 86

- STANDARD KITCHEN 88
- PREMIUM KITCHEN 90
- LUXURY KITCHEN 94
- HARDWARE 96
- HANDLES 100
- WOOD WORK 104



KITCHEN SHADES

- LAMINATE 106
- GRAPHICS LAMINATE 112
- UV HIGH GLOSS 113
- PU PAINTS 114
- LACQUERED GLASS 115
- ACRYLIC 116
- RUBBERWOOD 119



THE INDIAN
KITCHEN IS AN
ENSEMBLE OF SPICES,
SENTIMENTS AND
SPECIFICATIONS

UNLIKE
ANYTHING IN
THE WORLD



With so much to fit in to a small space,
the perpetual confusion lies in getting
the perfect modular setup for your
Indian kitchen.

But with Kutchina, you're set to explore
your dream kitchen that's beautiful,
smart and adorable. Relish the right
balance between space utility, design
and strength while retaining the unique
flavour of the hub of your house.

why choose **KUTCHINA?**

Founded in 2003, Kutchina Modular Kitchen is one of the top Kitchen Brands in India. Kitchens in Kutchina are not only about shapes and materials but also about careful and accurate manufacturing. So much has changed in the new millennium, and we have come a long way from traditional cabinet making to contemporary tailor-made kitchens. From wood to glass, to stone we have explored every material to suit your needs. Our kitchen solution enables the customer, designer or architect to express their own creativity freely without the restrictions imposed by standardised modules. Some of the things that makes us one of the best are -



Expert and experienced craftsmen.



High-precision and highly automated European wood working machinery.



Precise selection of materials.



Can be customised right down to the smallest detail.

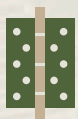


Allows a practically limitless combination of materials, colour and style.

CELEBRATING



SHOWROOMS AND INFINITELY HAPPY CUSTOMERS



All chosen kitchens are matched with the necessary hardware & other accessories.



The kitchens can be customized as per the special Indian cooking style and environment.

Our vision is to simplify your life, by improving the quality of the time and space dedicated to the kitchen in your home. At Kutchina, sustainable development finds its expression every day and at every level we strive to provide holistic kitchen solution at large.

MADE TO PERFECTION,
PACKED WITH
CONVENIENCE: KITCHENS
THAT SIMPLY REFLECT
YOUR STYLE

STANDARD KITCHENS

The Standard Kitchen is aimed at a modern and cosmopolitan spirit. This minimal kitchen with pure design and clean lines is a perfect fit in modern architecture and satisfies the most sophisticated needs of contemporary living in terms of functionality and aesthetics where less is more.

To add to it, Kutchina offers more than fifty shades of laminate and almost 12 shades of UV high gloss to choose from. These shades come in various finishes from plain, matt, glossy, textured to digital prints. Standard kitchens come in two layouts, straight and L but you can explore T, U, or even an Island if your kitchen size permits.



This linear kitchen is the only solution to fit a small rectangular kitchen space.

NUMICA STRAIGHT

With the help of amazing storage solutions and accessories that Kutchina provides, this design can optimize the little space to its fullest and can take advantage of every inch of the kitchen space functionally. Using two colours, with one of them being woody gives the required warmth a kitchen needs. Having a hot breakfast in the kitchen by the window with an outside view could be the best start to a fresh day.



NUMICA STRAIGHT

CABINET FINISH/MATERIAL USED

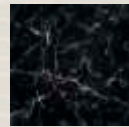


K/RCP/114



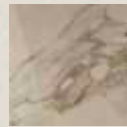
K/RCP/108

COUNTER TOP MATERIAL



Granite

DADO

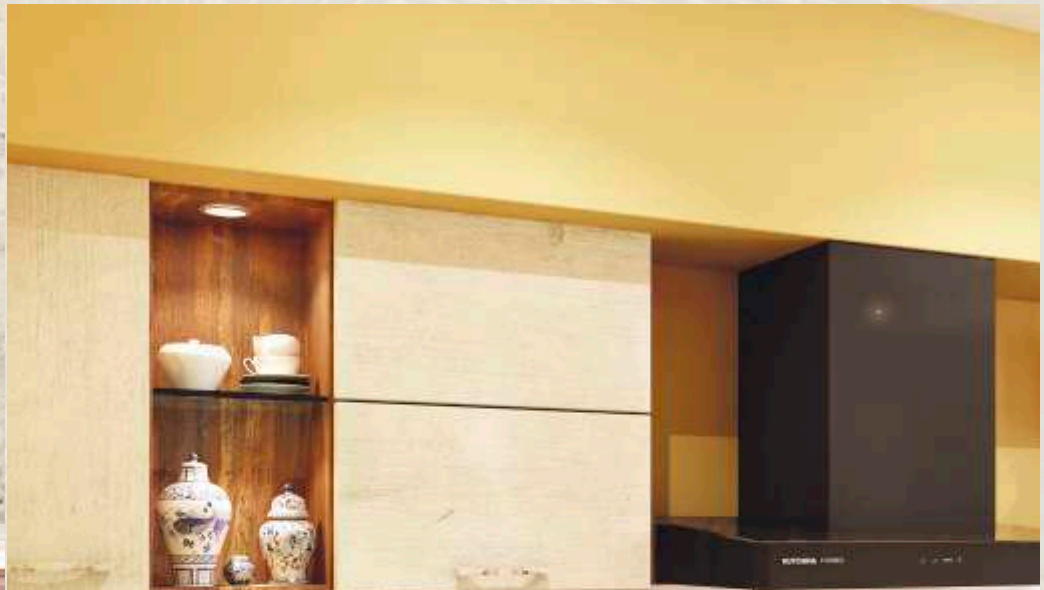


Ceramic Tiles,
Size 2'x2'
Matt Stone Finish



TECHNICAL SPECIFICATIONS

BWR Grade plywood carcass with premium laminate shutter finish offering 50 shade options.



The L kitchen layout is one of the most favourite kitchen layouts, as it provides a high level of adaptability.

NUMICA - L

Fitted along two adjacent walls to form this L-shape, these kitchens do not require much space and leaves enough for users to move.

Numica-L provides a larger worktop surface area, meaning that you have ample room for comfortably prepping and cooking tasty meals in an enjoyable environment. In addition, they can be fitted in any type of room, whether closed, open, square or mid-sized.







NUMICA-L

**CABINET FINISH/
MATERIAL USED**



K/RCP/111

**COUNTER
TOP MATERIAL**



Granite

DADO



Ceramic Tiles, Size 6"x3"
Matt White Style Subway



TECHNICAL SPECIFICATIONS

BWR Grade plywood carcass with
premium laminate shutter finish
offering 50 shade options.





With tall units, this kitchen oozes style with simplicity.

HI-GLOSS STRAIGHT

The white cabinets & herringbone pattern brighten up the whole kitchen. Adding a bit of greenery can appease your fondness for herbs as well as adds colour to the kitchen. To add to the fun, UV high gloss comes in 12 different shades for you to play with.



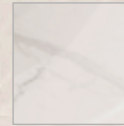
HI-GLOSS STRAIGHT

**CABINET FINISH/
MATERIAL USED**



101 (WHITE)

**COUNTER
TOP MATERIAL**



Granite

DADO



Ceramic Tiles,
Size 2'x3'
Matt Stone Finish





TECHNICAL SPECIFICATIONS

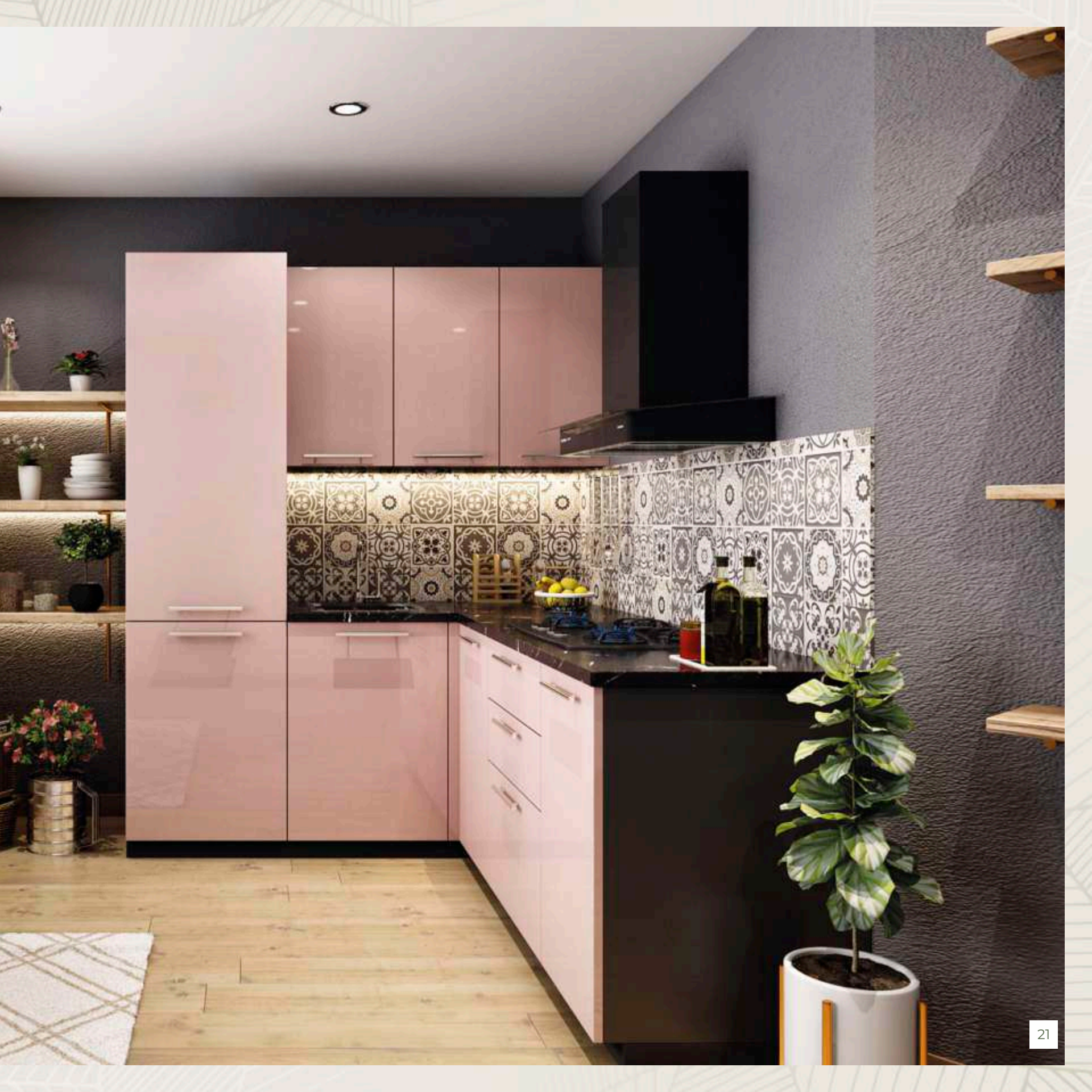
BWR Grade plywood carcass with UV high gloss shutter finish on M.D.F. board offering 12 shade options.

The uniqueness of this high gloss kitchen lies in the fact that the single bold colour of the shutters are being complemented with a printed dado.

HI-GLOSS L

A single colour gives the kitchen volume and makes it look bigger. The full wall height shelves at one end of the kitchen gives it a stylish look and an opportunity to display your collection of crockery and favourite kitchen accessories.







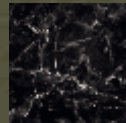
HI-GLOSS L

**CABINET FINISH/
MATERIAL USED**



134 Mocha Brown

**COUNTER
TOP MATERIAL**



Granite

DADO



Ceramic Tiles,
Size 2'x1' Matt Sugar
Finish - Style Moroccan



TECHNICAL SPECIFICATIONS

BWR Grade plywood carcass with UV high gloss shutter finish on
M.D.F. board offering 12 shade options.





Why limit your desires to one single finish for your dream kitchen when Kutchina's range of Nugloss fusion kitchens can give you the best of both worlds.

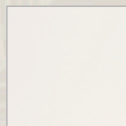
NUGLOSS

Nugloss combines laminate finish with UV High Gloss imparting a super modern look. The kitchen design also suggests ways to introduce a family breakfast table aligned along the walls, so that space remains clutter-free and keeps the family together.

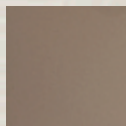


NUGLOSS

CABINET FINISH/MATERIAL USED

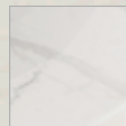


WHITE 101



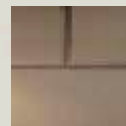
K/CP/089

COUNTER TOP MATERIAL



Granite

DADO



Ceramic Tiles,
Size 6"x3"
Matt White
Style Subway



TECHNICAL SPECIFICATIONS

BWR Grade plywood carcass with a shutter finish combination of laminate on plywood and UV high gloss on M.D.F. board.



CONTEMPORARY
KITCHENS WITH
A TOUCH OF CLASS:
FOR KITCHENING
THAT'S SUPERIOR
& STRIKINGLY
STUNNING

premium KITCHENS

Premium Kitchens let you create your personal space and stylishly organize your needs. Equipped with new finishes such as Acrylic, Rubberwood and Lacquered Glass, these kitchens offer a contemporary design that is elegant yet practical.

A mirror-like finish in a wide range of colours is what Acrium promises to give to your cooking space.

ACRIUM

The design of this acrylic finish kitchen shows how the presence of a full wall cabinet can release you of a need for cabinets above your slab space and help to keep your slab space free so that you can cook up a dream meal comfortably. The single colour design further gives freedom to splash up your dado and give an attractive background to the chimney area.





ACRIUM

CABINET FINISH/ MATERIAL USED



APL-305

COUNTER TOP MATERIAL



Acrylic
Solid
Surface

DADO



Ceramic Tiles,
Size 2'x1' Matt
Sugar Finish-
Style Moroccan





TECHNICAL SPECIFICATIONS

BWR Grade plywood carcass with acrylic shutter finish on HDHMR board offering as many as 60 shades.



WOODY

A solid wood kitchen always exudes warmth and gives you a kind of high-end and classical look, which is popular in Europe and South-East Asia. The wooden tones of this lovely kitchen are balanced with white tiles and a glass-door upper cabinet. This not only visually lightens the feel but also makes it easy to access essentials.



WOODY

**CABINET FINISH/
MATERIAL USED**



Natural
Rubber Wood

**COUNTER
TOP MATERIAL**



Granite

DADO



Ceramic Tiles, Size
6"x3" Matt White
Style Subway





TECHNICAL SPECIFICATIONS

BWR Grade plywood carcass with matching laminate, the shutter finish is of natural rubberwood material.

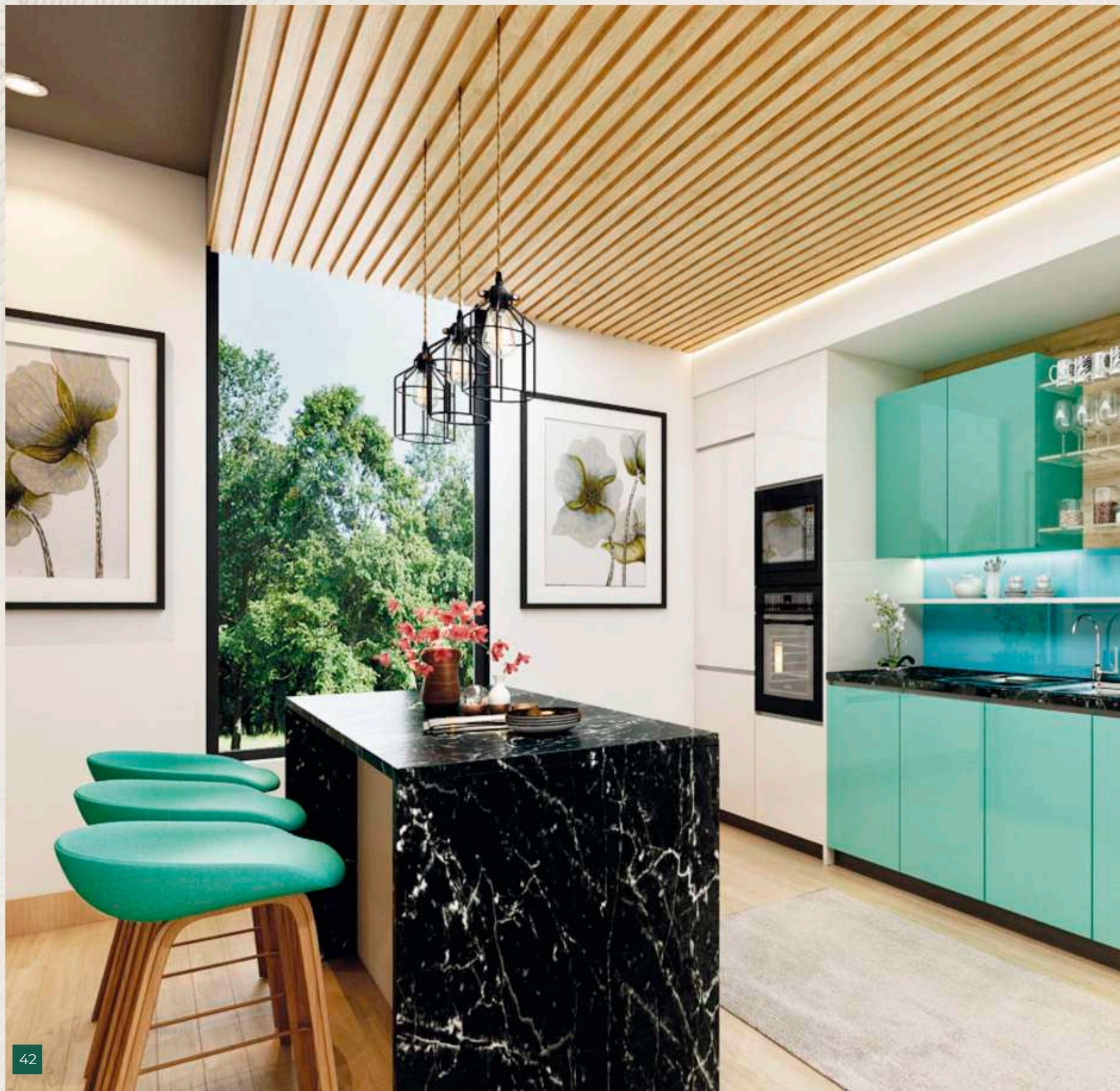
Who can resist a beautiful lacquered glass? And more so now it has become so affordable.

LACQUERY

Lacquery is hard-wearing and reflects light too for an ultra-designer effect. If you seek a glossy finish that is seamless in the truest sense, getting a glass kitchen would be a great idea. Dark blue creates an electric aesthetic, and the use of black and wood only enhances its charm giving your kitchen the swanky look you always wanted.







Polyurethane finish is a versatile premium finish that ranges from matt to high-gloss.

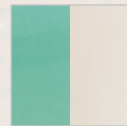
Polygon

It is highly durable, heat & water resistant. Defined by its slick look and high durability, this turquoise green Polygon kitchen embodies unmatched style and performance. The playful bright colour palate that it offers makes even a small kitchen space come alive.



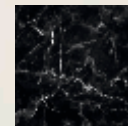
polygon

CABINET FINISH/ MATERIAL USED



PU-Green &
White

COUNTER TOP MATERIAL



Granite

DADO



Lacquered Glass
and Ceramic Tiles -
Style Wooden

TECHNICAL SPECIFICATIONS

BWR Plywood Carcass, and the shutter finish is PU paint on MDF board.



POLYWOOD

Rubberwood and PU paint go hand in hand as they give each other the necessary contrast to create a modern kitchen with an earthy tone. Wood and white is a popular combination across the globe and this Polywood kitchen with its brick tiled dado and green wall creates a perfect hearth for a healthy lifestyle.





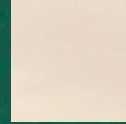


POLYWOOD

CABINET FINISH/MATERIAL USED



Rubberwood
(Natural)



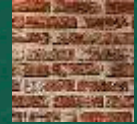
PU White

COUNTER TOP MATERIAL



Granite

DADO



Ceramic Tiles,
Size 2'x1'
Matt Joints
Free-Style-Brick





TECHNICAL SPECIFICATIONS

A fusion of BWR plywood carcass, shutter, rubberwood, lacquer polish and PU paint of MDF.



If you seek a glossy finish that is seamless in the truest sense, getting a combination of glass and acrylic finish would be a great idea.

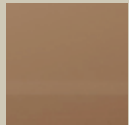
GLASSYLIC

The ultimate pure shapes of two elements, Lacquered Glass and Acrylic fused together enhances the highly sophisticated and modern design of the Glassylic kitchen. Keeping the colour selection a little neutral like capuccino and white creates a homely environment for a loving family.

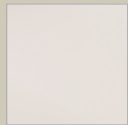


GLASSYLIC

CABINET FINISH/ MATERIAL USED



APL 207



K/LG/W6
WHITE

COUNTER TOP MATERIAL/DADO



Caesarstone





TECHNICAL SPECIFICATIONS

Another exciting fusion of materials and finishes with a plywood carcass, acrylic on HDHMR and lacquered glass shutter on MDF.



BESPOKE KITCHENS
THAT SUIT YOUR
TASTE FOR FINNESE:
STEEPED WITH
OPULENCE, TAILORED
FOR INDULGENCE

LUXURY KITCHENS

A kitchen becomes a luxury when the pleasure of cooking naturally combines with the pleasure of spending time with friends and family.

A space for social life, that expands, intelligently and conveniently, surprising you not only with its eye-catching design but also with the sophistication and quality of its materials.

CRYSTALUX



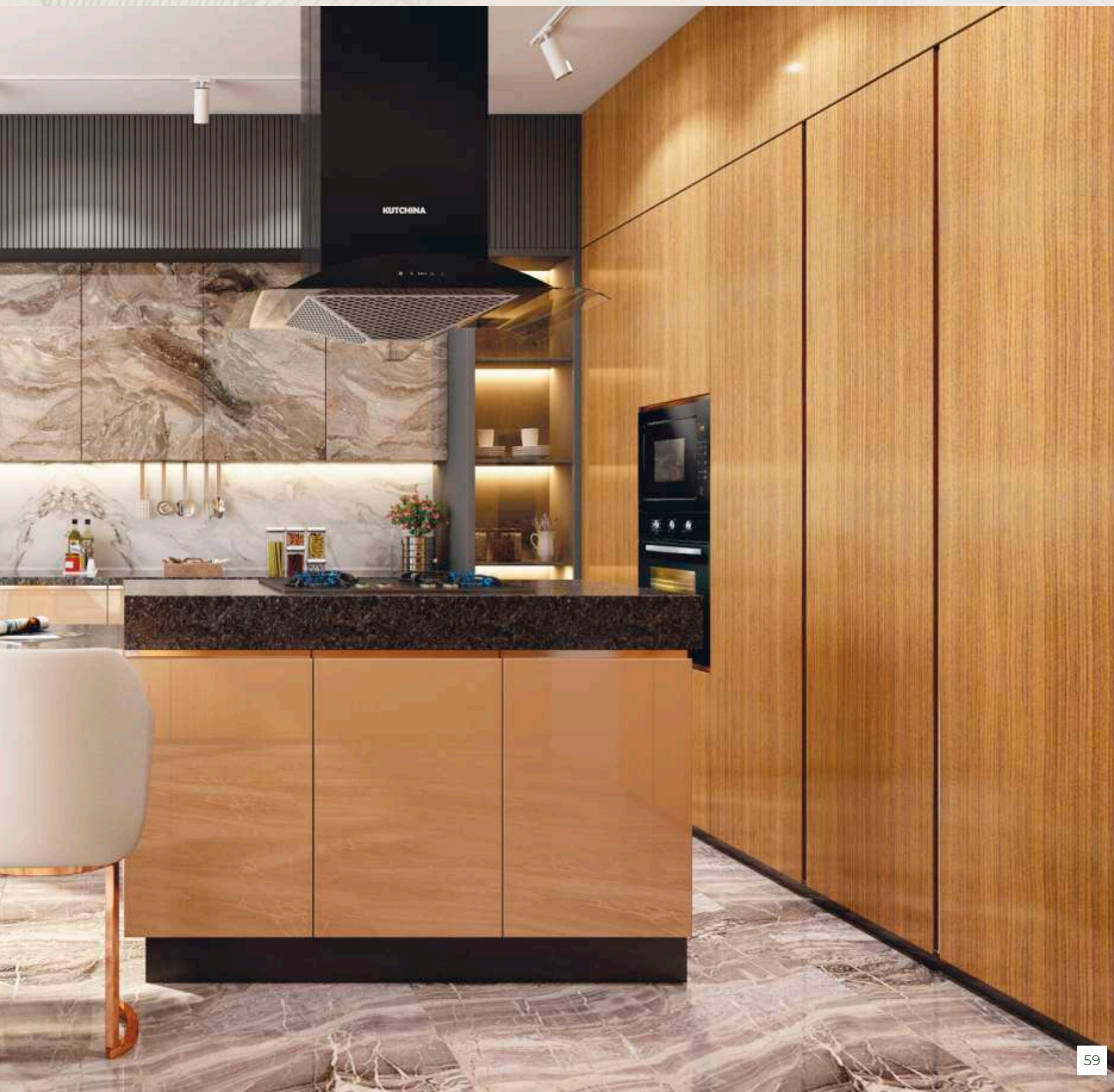


Smooth crystal like
sheen fused with arty
patterns and designs

CRYSTALUX

A finish that gleams like crystal is what a Crystalux kitchen offers. These scratch-resistant gleaming surfaces bring out the distinct character of the kitchen, enhancing the value of the heart of every home, in a sophisticated way. The handle-less kitchen layout focuses on the rhythmic and geometric pace along with eye-catching aesthetics.



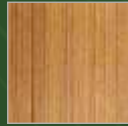


CRYSTALUX

CABINET FINISH/MATERIAL USED



Marmo Toscana

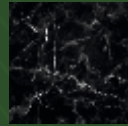


Legno Argentato



Rame 1678L

COUNTER TOP MATERIAL



Caesarstone

DADO



Caesarstone





TECHNICAL SPECIFICATIONS

It contains more than 20 shades options, the plywood carcass and crystal acrylic shutter finish on MDF board.

ACRYLUX





An island of utility and design for the perfect kitchen-dining experience.





ACRYLUX

The Acrylux kitchen with its free-standing island that doubles as a unique dining experience with a stylistic approach merges shapes, functionality, and contemporary styling. Endowed with modern sleekness, it is both lush and chic.



acrylux

**CABINET FINISH/
MATERIAL USED**



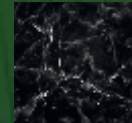
Gabbiano
6339B

**COUNTER
TOP MATERIAL**



Caesarstone

DADO



Caesarstone



TECHNICAL SPECIFICATIONS

BWR plywood carcass with Acrylic
shutter on HDHMR Board





stonilux





A never-seen-before
3D stone finish
kitchen that's just in
the lap of nature.

STONILUX

Stonilux, the latest trending kitchen with three dimensional stone finish shutters will give you a feel of being amidst nature while enjoying the sophistication of a state-of-the-art modern kitchen. The harmonious appeal of black appliances and glass shutters matches seamlessly with the textured feel of the stone veneer.

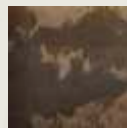






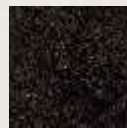
stonilux

**CABINET FINISH/
MATERIAL USED**



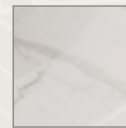
OS-4 Duna Madrid

**COUNTER
TOP MATERIAL**



Caesarstone

DADO



Caesarstone





TECHNICAL SPECIFICATIONS

BWR plywood carcass with Stone Veneer shutter on HDHMR Board, offering 3 lovely shades.



POLYIUX





The vintage look & feel of PU finish
over wood is class redefined.





KUTCHINA®
Designed for Convenience

Discretion and elegance, warmth and personality frames the new Polylux kitchen that redefines the expression of the Classic Kitchen.

polylux

The unique concept of PU finish on rubberwood draws attention owing to its balanced composition and colour and gives the kitchen space an English country-style look.



polylux

CABINET FINISH/MATERIAL USED



K/PUP/R7032



K/PUP/FY013

**COUNTER
TOP MATERIAL**



Caesarstone

DADO



Caesarstone



TECHNICAL SPECIFICATIONS

It comes in exquisite shades upon a carcass of plywood with a shutter finish of PU paint on rubberwood.



FUSILUX





Flowy and fancy,
the marble finish
acrylic shutter
personifies class.

The fluid lines of Fusilux evokes pure emotion.

FUSILUX

A design that is soft and distinctive to the most important part of your home, rendering it more functional and ergonomic. The marble finish acrylic shutter along with a full wall Aluminum Framed storage cupboard with glass shutters further adds to its prestigious appeal turning the kitchen timeless.

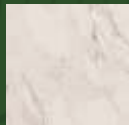






FUSIUX

**CABINET FINISH/
MATERIAL USED**



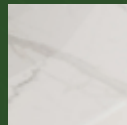
Marmo Bianco

**COUNTER
TOP MATERIAL**



Caesarstone

DADO



Caesarstone





TECHNICAL SPECIFICATIONS

The BWR plywood carcass with a shutter finish of crystal acrylic on MDF Boards.



Eloquent fittings
for the flawless finishing touch

accessories

Choose from an array of functional and modern accessories that give your kitchen a much-awaited uplift along with a touch of convenience.

ACCESSORIES FOR

STANDARD KITCHEN

**CORNER
CAROUSAL / 270**



CABINET SIZE 800 x 800

SIZE DIA 700

CODE K/CA/270

**MULTIPURPOSE
PULLOUT**



CABINET SIZE 450

SIZE 360 x 440 x 530

CODE K/MSB/3

**TWO LAYER SIDE SLIDING
BOTTLE PULLOUT / 150**



CABINET SIZE 200

SIZE 100 x 420 x 485

CODE K/BT/150

**TWO LAYER
MICRO OVEN STAND**



CABINET SIZE NA

SIZE 545 X 410 X 280

CODE K/HG/MW/1

**ONE LAYER
MICRO OVEN STAND**



| | |
|---------------------|-----------------|
| CABINET SIZE | NA |
| SIZE | 545 X 410 X 110 |
| CODE | K/HG/MW2 |

PIPE



| | |
|---------------------|-----------|
| CABINET SIZE | NA |
| SIZE | |
| CODE | K/PIPE/16 |

HOOKS DOUBLE



| | |
|---------------------|----------|
| CABINET SIZE | NA |
| SIZE | |
| CODE | K/HOOK/2 |

HOOKS SINGLE



| | |
|---------------------|----------|
| CABINET SIZE | NA |
| SIZE | |
| CODE | K/HOOK/1 |

THALI BASKET/ 2



| | |
|---------------------|-----------------|
| CABINET SIZE | 600 |
| SIZE | 520 X 485 X 150 |
| CODE | K/TH/2 |

SPOON HOLDER



| | |
|---------------------|-----------------|
| CABINET SIZE | NA |
| SIZE | 150 x 100 x 170 |
| CODE | K/HG/SPI |

PLAIN BASKET/ 1



| | |
|---------------------|-----------------|
| CABINET SIZE | 450 |
| SIZE | 370 X 485 X 100 |
| CODE | K/BS/1 |

CUP & SAUCER/ 1



| | |
|---------------------|-----------------|
| CABINET SIZE | 450 |
| SIZE | 370 X 485 X 100 |
| CODE | K/CS/1 |

ACCESSORIES FOR Premium KITCHEN

**SIDE PULLOUT DSA
WITH ARTLINE**



CABINET SIZE 300

FINISH CHROME

**BLUM TANDEM BOX
WITH ORGALINE**



CABINET SIZE 600, 900

FINISH SILVER GREY

**BLUM TANDEMBOX
LADDER UNIT**



CABINET SIZE 600

FINISH SILK WHITE

**SWING OUT
CHEF'S PANTRY**



CABINET SIZE 900

FINISH SS CHROME

TALL 1



CABINET SIZE 450 X 2000

FINISH SS CHROME

**WARICORNER
ARTLINE**



CABINET SIZE 1050

FINISH SILVER GREY

PLATE CARRIER



CABINET SIZE 600, 900

FINISH BAMBOO

COOKING AGENT



CABINET SIZE 300

FINISH SILVER

**BAMBOO PLATE
ORGANIZER**



CABINET SIZE 600, 900

FINISH BAMBOO

I MOVE



CABINET SIZE 600, 900

FINISH SILVER

TURNMOTION



CABINET SIZE 600

FINISH ANTHRACITE

PORTERO



CABINET SIZE 600, 900

FINISH SILVER

ACCESSORIES FOR Premium KITCHEN

BLUM TANDEMBOX INTIVO



CABINET SIZE 450 - 900

FINISH SILK WHITE

LEGRABOX 2DIFFERENT TYPES



CABINET SIZE 450 - 900

FINISH ORIAN GREY

MAGIC CORNER



CABINET SIZE 1050

FINISH SS

LEMANS CORNER



CABINET SIZE 1050

CUISIO CUTLERY



CABINET SIZE 600, 900

FINISH WHITE
TRANSLUCENT

DUSA ARTLINE



CABINET SIZE 600

FINISH ARTLINE

**TANDEM BOX ANTRAO
DRAWER SYSTEM**



CABINET SIZE 450 - 900

FINISH WHITE & GREY

**BAMBOO BOX FRAME
DRAWER ORGANIZER**



CABINET SIZE 900 MM

FINISH BAMBOO

**TANDEM BOX PLUS
DRAWER SYSTEM**



CABINET SIZE 450 - 900

FINISH WHITE & GREY

**WASTE BOY
WASTE SYSTEM**



CABINET SIZE 600, 900

FINISH DARK GREY

VS TAL GATE PRO



CABINET SIZE 600 X 2000

FINISH LAVA GREY

VS CORE FLEX



CABINET SIZE 1050

FINISH LAVA GREY

ACCESSORIES FOR

LUXURY KITCHEN

**STACK MODULAR SHELVING
SYSTEM (ROSE GOLD)**



CABINET SIZE 600, 900

FINISH SILVER, GRAPHITE,
GOLD, ROSE GOLD

LEMANS



CABINET SIZE 1050

SIZE 450

CONVOY LAVIDO



CABINET SIZE 600 X 2000

**QANTO - CORNER
SOLUTIONS**



CABINET SIZE 600 X 600

BLUM DRAWER SYSTEM



CABINET SIZE 600 - 900

FINISH STAINLESS
STEEL

TOPFLEX



CABINET SIZE 450 - 900

FINISH WHITE

**BLUM ORGA-LINE
DIVIDERS**



CABINET SIZE 600, 900

FINISH GREY

VS SUB SIDE



CABINET SIZE 200

FINISH PREMEA GREY

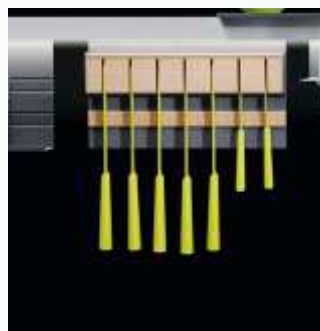
BLUM SPACE CORNER



CABINET SIZE 900

FINISH WHITE

LINERO MOSAIQ



CABINET SIZE

FINISH BLACK/ GREY

**BLUM SERVO DRIVE FOR
DRAWER SYSTEM**



CABINET SIZE 600 X 200

**BLUM SERVO DRIVE FOR
AVENTOS HK**



CABINET SIZE 600 - 900

FINISH GREY



Sturdy core for a
high-strength set-up

hardware

An exquisite range of strong and durable hardware essentials that can be entrusted for a wholesome kitchening experience.

Hardware

BLIND CORNER HINGE



MULTITECH SET (86/500)



0 DEGREE INTERMAT HINGE



**PLINTH 100 MM SILVER
(MINI 8 FT)**



SLIDING CHANNEL



**MULTITECH RAILING
SET - 500 MM**



L-CORNER HINGE



PLINTH BRACKET



**INNOTECH DRAWER SET
(500 MM) SILVER**



**PLINTH CORNER
CONNECTOR SILVER**



PVC LEGS 100MM



**G-HANDLE /
PROFILE HANDLE**



**STAY-PROLIFT
(HYDRAULIC) - PLC 08**



L-CLIP



D-BRACKET - 8 MM



SHELF SUPPORT



**GLASS CORNER
(PKT OF 4)**



PLINTH END CAP



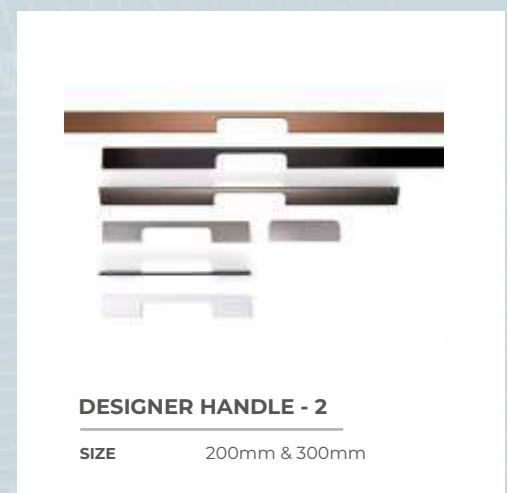
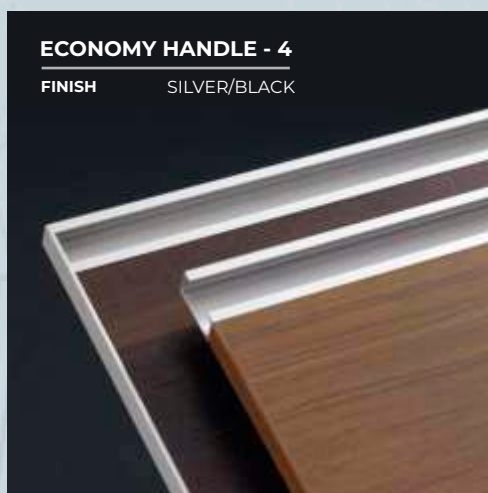


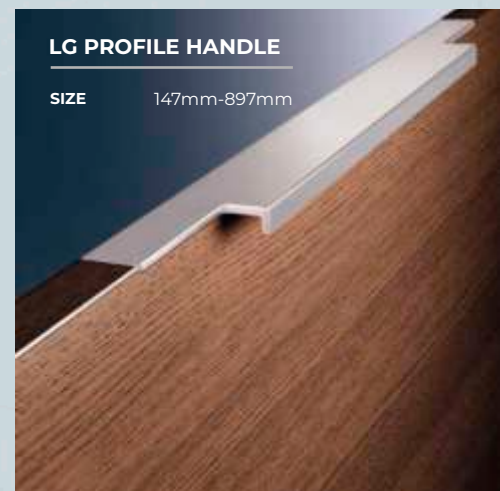
Handles every grip,
touch & style

HANDLES

A perfect hold-on to your everyday kitchen chores, there's a handle for every purpose, need and space.

HANDLES





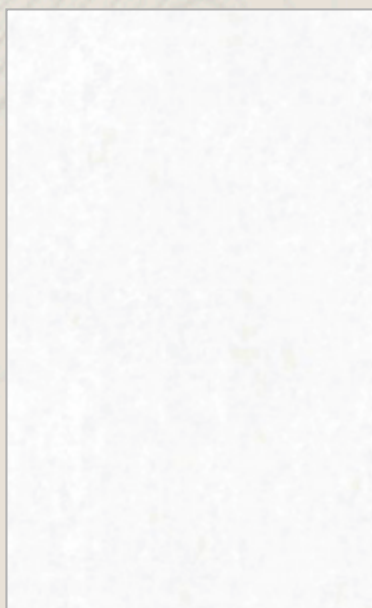


Finish it with the
shades of convenience

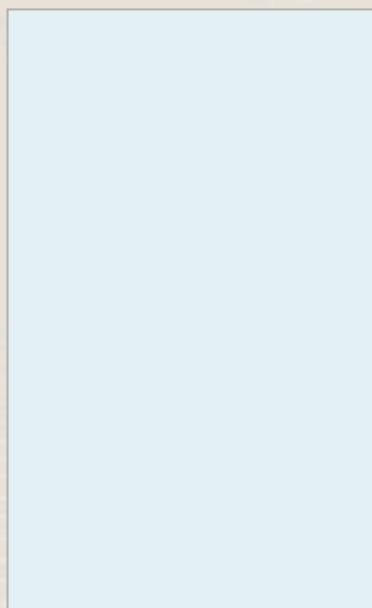
W O O D W O R K

From glossy graphic laminates to premium rubberwood and lacquered glass – complete your kitchen with hues that reflect your style and persona.

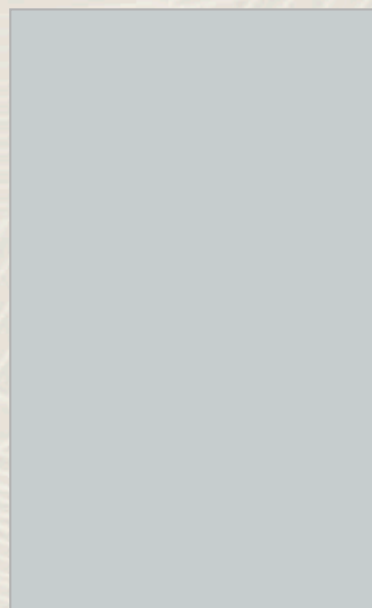
KITCHEN SHADES LAMINATE



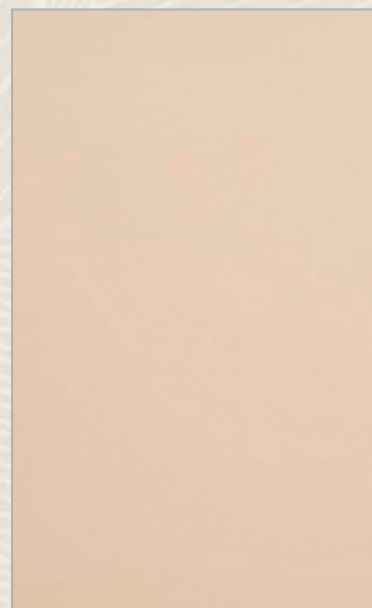
K/GP/088



K/MP/104



K/CP/031



K/RCP/121



K/CP/032



K/MP/093



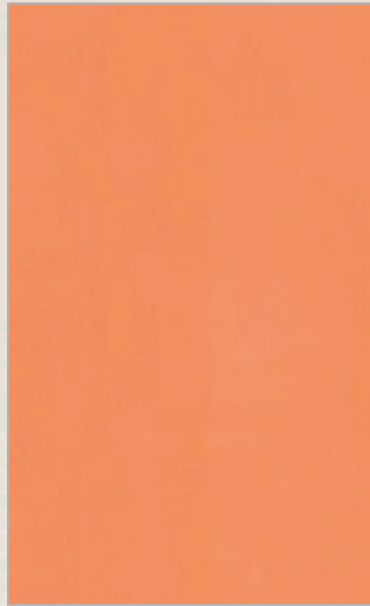
K/MP/105



K/CP/090



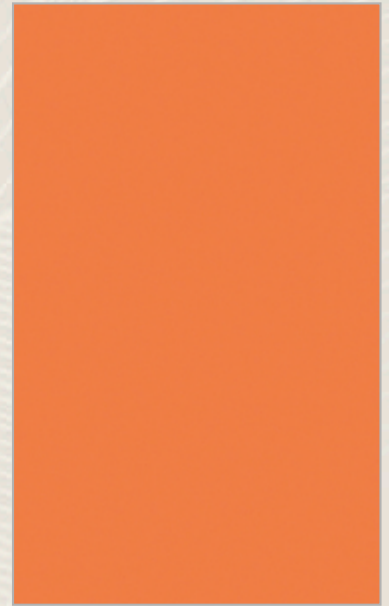
K/MP/103



K/CD/039



K/MP/102



K/CD/014



K/CP/091



K/CD/004



K/CD/006



K/MP/100



K/CP/089



K/MP/094



K/GP/087



K/MP/095



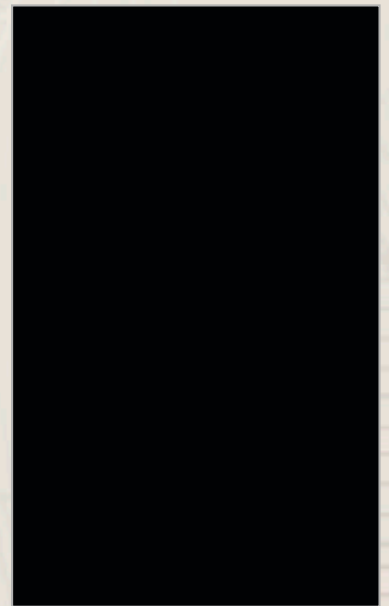
K/MP/099



K/MD/016



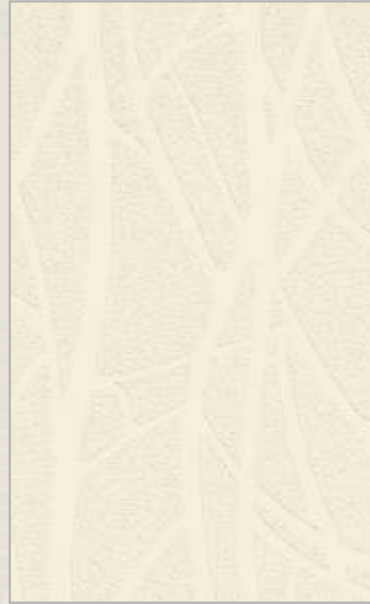
K/MP/101



K/CD/045



K/CP/070



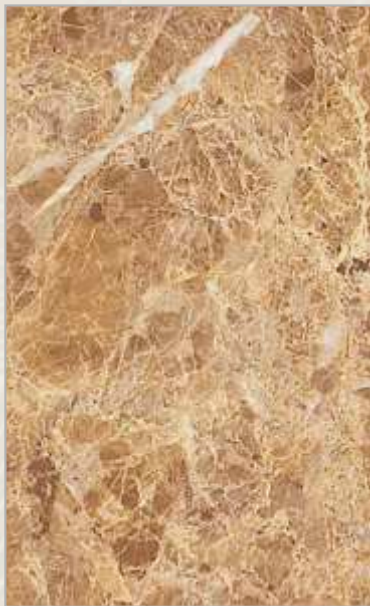
K/CP/056



K/CD/063



K/RCP/108



K/RC/074



K/RCP/112



K/RCP/111



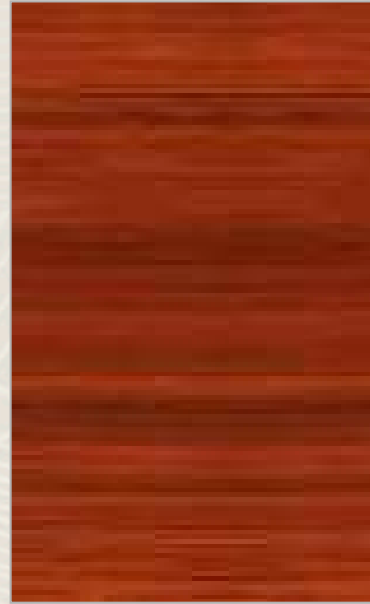
K/CD/015



K/RCP/120



K/RCP/119



K/GD/106



K/GD/107



K/RCP/110



K/RCP/109



K/CP/055



K/RCP/114



K/RCP/113



K/CD/072



K/RT/076



K/CP/030



K/CP/069



K/RC/075



K/RCP/115



K/CP/096

GRAPHICS LAMINATE

K-GL-1006



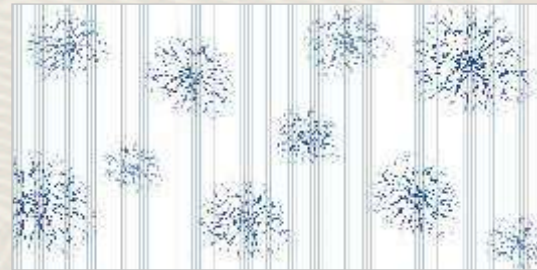
K-GL-1005



K-GL-1017



K-GL-RCD-26



K-GL-RCD 36M



K-GL-LCD-1023



K-GL-LCD-1030



K-GL-LCD-1014



KITCHEN SHADES UV HIGH GLOSS



101 WHITE



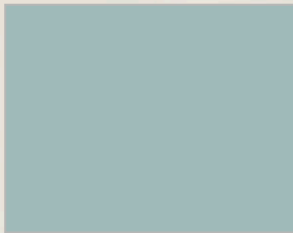
103 FROSTY WHITE



120 IRISH CREAM



134 MOCHA BROWN



128 MINT GREEN



104 SILVER GLITTER



108 YELLOW



116 NEW ORANGE



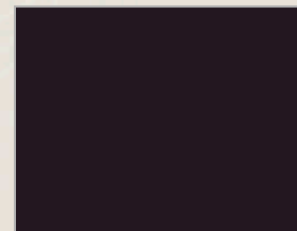
107 CARDINAL RED



118 BURGANDY RED

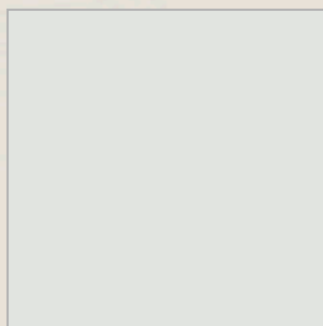


123 DARK VIOLET



106 BLACK

KITCHEN SHADES PU paints



PU WHITE



PU - GREY



PU - VIOLET



PU - YELLOW



PU - ORANGE



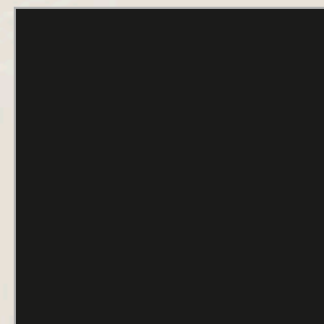
PU NEW GREEN



PU AVOCADO

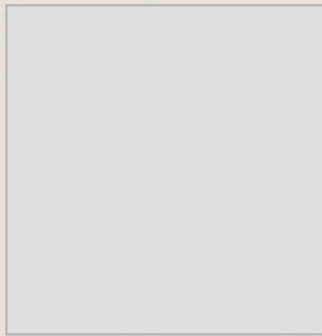


PU FRENCH NAVY



PU BLACK SEA

KITCHEN SHADES LACQUERED GLASS



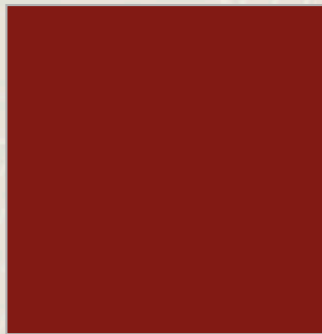
K/LG/W6 WHITE



K/LG/Y1 YELLOW



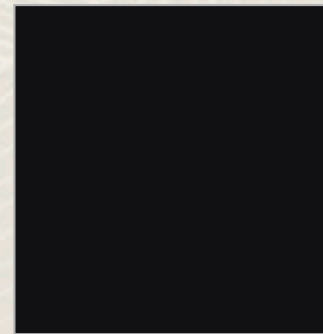
K/LG/O2 ORANGE



K/LG/FR5 FLAME RED

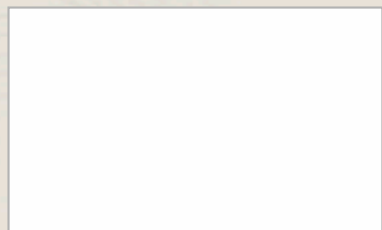


K/LG/AB3 BLUE

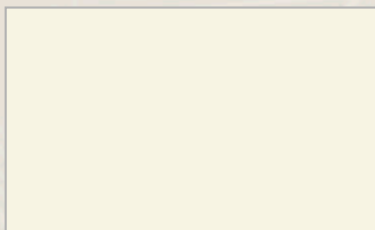


K/LG/B4 BLACK

KITCHEN SHADES ACRYLIC



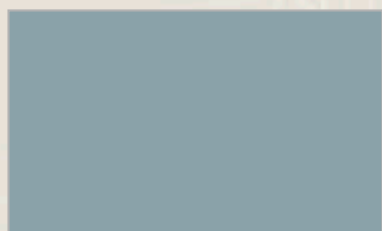
APL 321 SP
DESIGNER WHITE



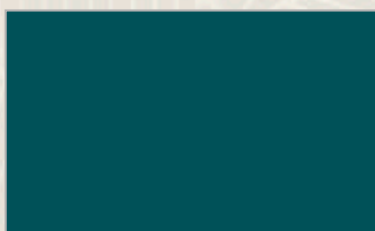
APL 622 SM SILKY IVORY



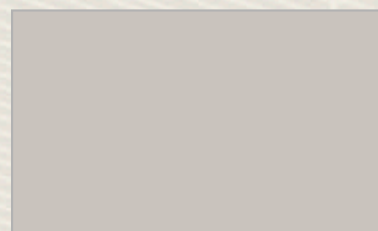
APL 332 SP
SEA CORAL



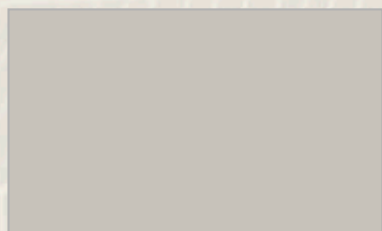
APL 331 SP
SOBER BLUE



APL 322 SP
TURQUISE BLUE



APL 323 SP
SAND BROWN



APL 327 SP
CASHMERE



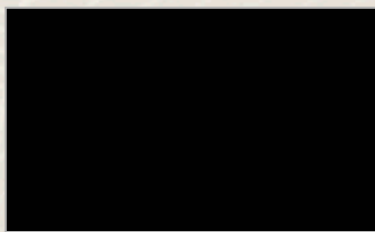
APL 625 SM SILKY GREY



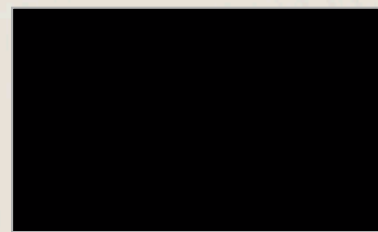
APL-324 SP GOTHIC GREY



APL 623 SM SILKY CREAM

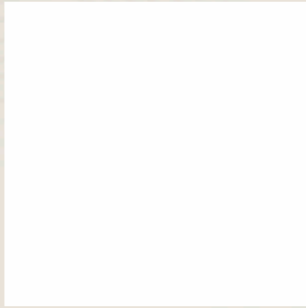


APL 626 SM SILKY BLACK

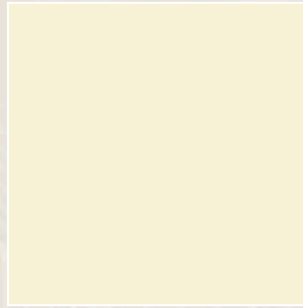


APL-335 SP CHARCOAL

KITCHEN SHADES ACRYLIC



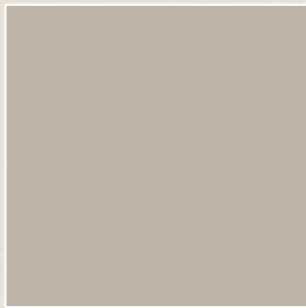
APL-104
SUPER WHITE



APL-103 CREAM



APL-207
CAPUCCINO



APL-208
BROWN GREY



APL-210
STONE GREY



APL-205 BLUE



APL-204 PISTACHIO

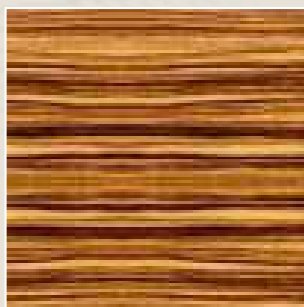


APL-202 RED

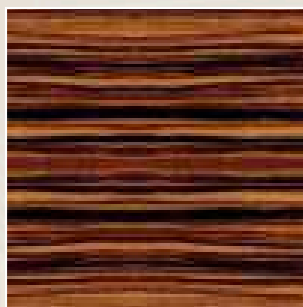


APL-203 VIOLET

KITCHEN SHADES ACRYLIC



APL-404 LIGHT
WOOD HORIZONTAL



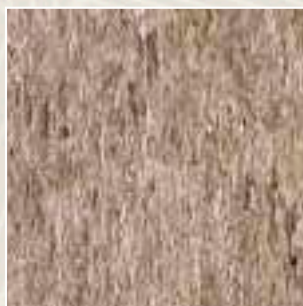
APL-405 DARK
ZEBRANO HORIZONTAL



APL-411 OAK COFFEE



OS-1 TOSCA ROME



OS-2 TOSCA BERLIN



OS-4 DUNA MADRID

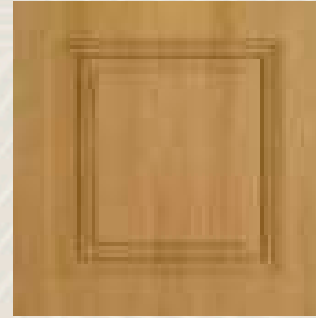
KITCHEN SHADES RUBBERWOOD



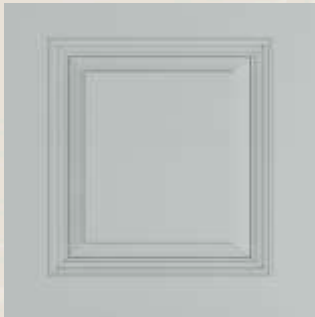
R W Walnut



R W Cherry Beach



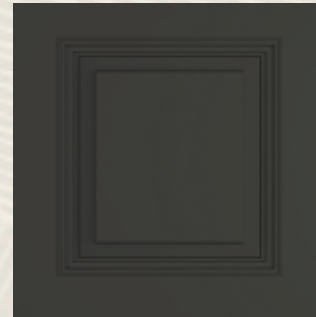
R W Natural



K/PUP/W001



K/PUP/NG010



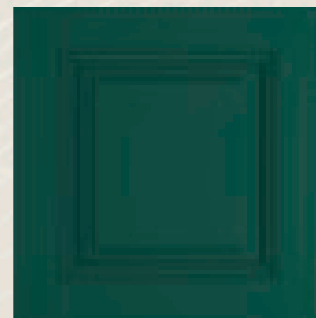
K/PUP/P0012



K/PUP/NG0011



K/PUP/FY013



AVOCADO

KUTCHINA®

Designed for Convenience

Bangalore/Delhi/Guwahati/Kolkata/Mumbai

Kutchina Home Makers Pvt. Ltd.
Bajoria Tower - 20, Chinar Park
(Near New Town City Center 2) Kolkata - 700157
www.kutchina.com